

Item: Chair – Operative Chairs

Item: Korium Plus

Description:

Task swivel chair available in the following versions:

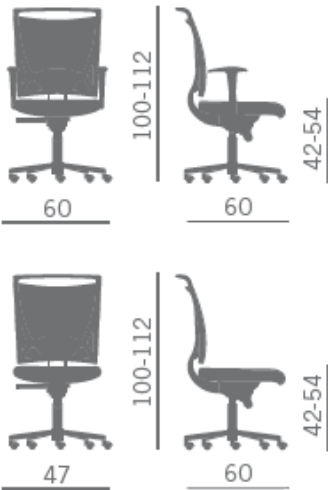
- high and low backrest
- backrest structure in black or grey polypropylene
- backrest is upholstered.

The backrest structure can be black or grey.



Upholstered Options:  
See sheet  
-D – EXTREMA/AU  
-EXTREMA IKON

Dimensions (in cm):



Armrest Options:



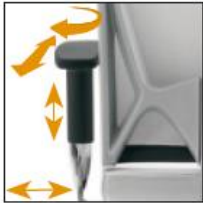
Polyurethane arm



Adjustable  
extensible and  
rotating arm



Aluminum arm,  
padded or black  
polyurethane top



Adjustable,  
rotating,  
extensible,  
stretchable arm

Remarks / Upholstery selected:

-----

-----

-----

-----

Backrest:



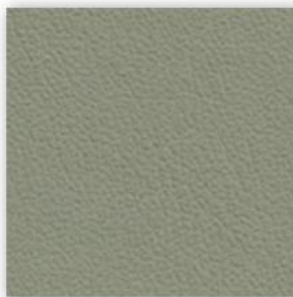
Flexing Backrest:



Upholsteries: D – EXTREMA/AU



D 420



D 426



D 430



D 427



D 432



D 422



D 425



D 428 (Dark brown)



D 431



D 421



D 423



D 424



D 429

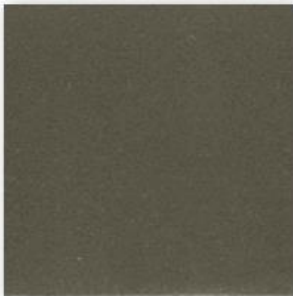
Upholsteries: D – EXTREMA IKON



D 470



D 471



D 472



D 473



D 473



D 474



D 475



D 476



D 477



D 478



D 479



D 480 (Dark brown)



D 481



D 482