

Item: Desks & Containers – Operative Desks

Item: Sedici Noni S1\_Operative

Description:

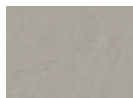
Sedici Noni is made with a structure in steel tube with rectangular section painted with aluminum or white epoxy powders.

The worktops are made “ecological” wood fiber panels (18 or 30mm thickness) with 2 mm thickness ABS edges in the same color.



Melamine Worktops  
(18mm thick)

Finish Options:



☐ Spatulate Grey



☐ Dove gray oak



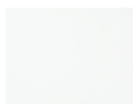
☐ Bleached oak



☐ Walnut



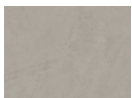
☐ Maple



☐ Light white

Modesty Panel  
(18mm thick)

Finish Options:



☐ Spatulate Grey



☐ Dove gray oak



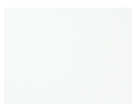
☐ Bleached oak



☐ Walnut



☐ Maple



☐ Light white

Modesty Panel  
(30mm thick)

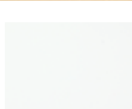
Finish Options:



☐ Walnut

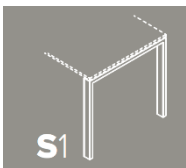


☐ Maple

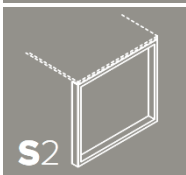


☐ Light white

Legs Options:



☐ S1



☐ S2



☐ S3

Remarks/Finish :

-----

-----

-----

-----

Metal Legs  
Finish Options:



☐ White



☐ Lava Gray



☐ Dove Gray